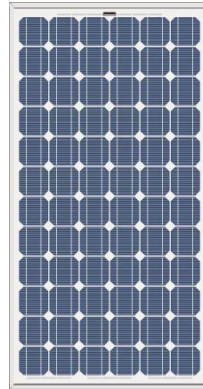


## SOLAR MODULES

# STP175S-24/Ac

STP180S-24/Ac  
STP170S-24/Ac



### Specifications

Cell	Monocrystalline silicon solar cells 125mm×125mm
No. of cells and connections	72 (6×12)
Dimension of module(mm)	1580×808×35
Weight	15.5 kg

### Characteristics

Model	STP180S-24/Ac	STP175S-24/Ac	STP170S-24/Ac
Open circuit voltage (Voc)	44.8V	44.2V	43.8V
Optimum operating voltage(Vmp)	36 V	35.2 V	35.2 V
Short circuit current(Isc)	5.3A	5.2A	5.14A
Optimum operating current(Imp)	5A	4.95A	4.83A
Maximum power at STC(Pm)	180Wp	175Wp	170Wp

STC:Irradiance 1000W/m<sup>2</sup>,Module temperature 25°C,AM=1.5

### Limits

Operating temperature	-40 to +85°C
Maximum system voltage	1000 V DC

### Temperature and Coefficients

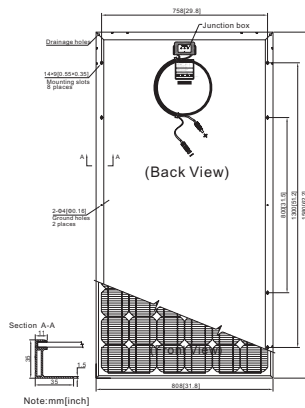
NOCT	48°C ± 2°C	
Current temperature coefficient	%/K	0.06 ± 0.01
Voltage temperature coefficient	mV/K	-(155 ± 10)
Power temperature coefficient	%/K	-(0.5 ± 0.05)

NOCT: Nominal Operation Cell Temperature

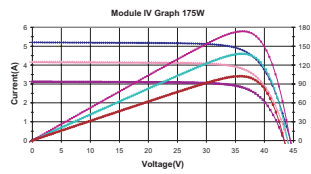
### Output

Type of output terminal	Junction box
Cable	LAPP(4.0mm <sup>2</sup> )
Asymmetrical lengths	1200mm(-) and 800mm(+)
Connection	Suntech Plug Type IV

### Blueprint of the module



### Characteristics



© Copyright Suntech Power Co., Ltd. 2008  
This publication summarises product warranty and specifications which are subject to change without notice.

